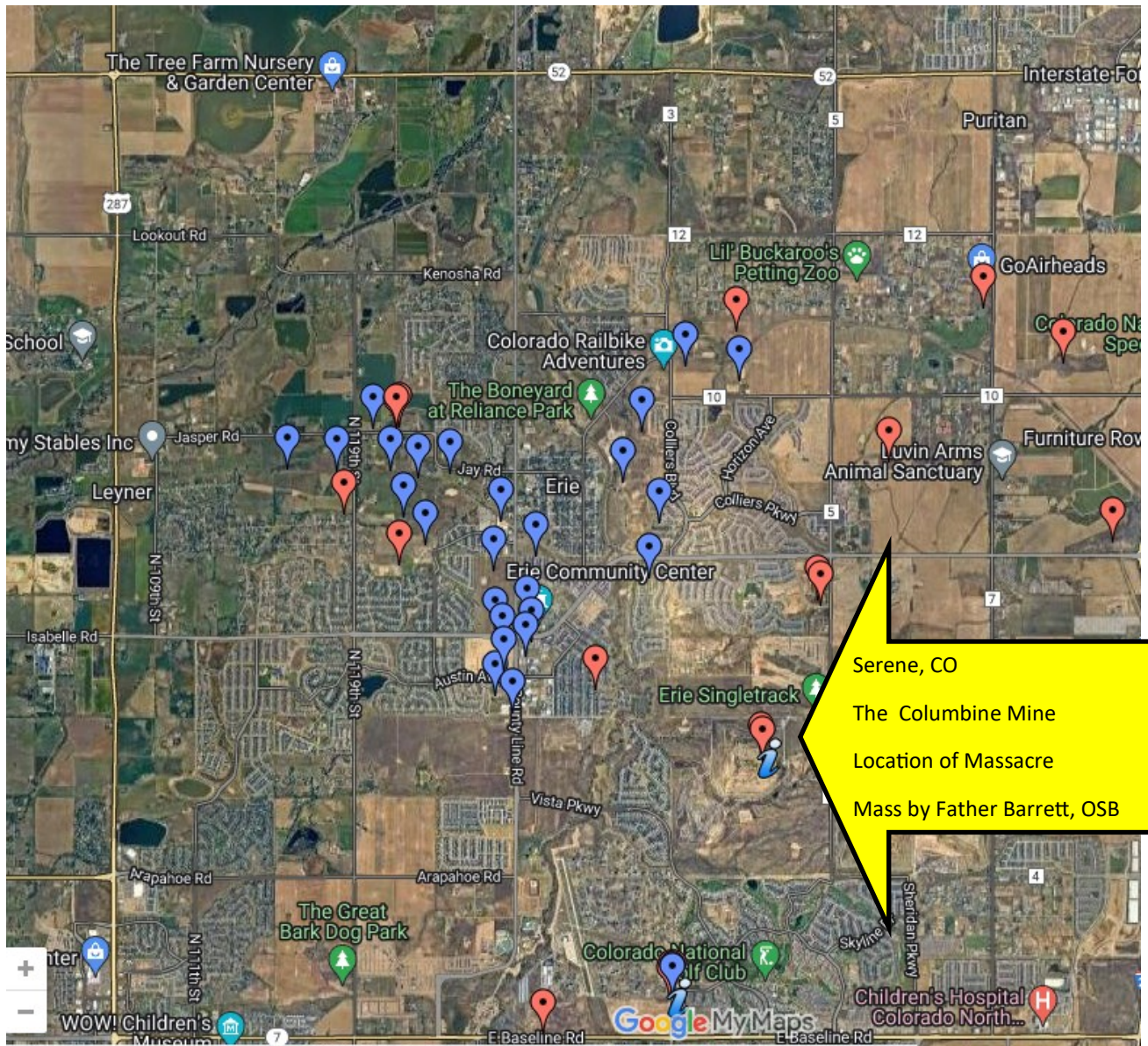


# The Parish Hall was a Catholic Church in Serene (Rd 5, between Erie Pkwy & Vista Ridge)



The last services were held in 1931, it sat vacant until 1940

# The Parish Hall as The Catholic Church Map Location



Blue icons are mines from the late 1800s and the red icons are mines in the 1900s

Map from <https://www.eriehistoricalsociety.org/erie-coal-mines/erie-colorado-coal-mines-map/> and Google Maps